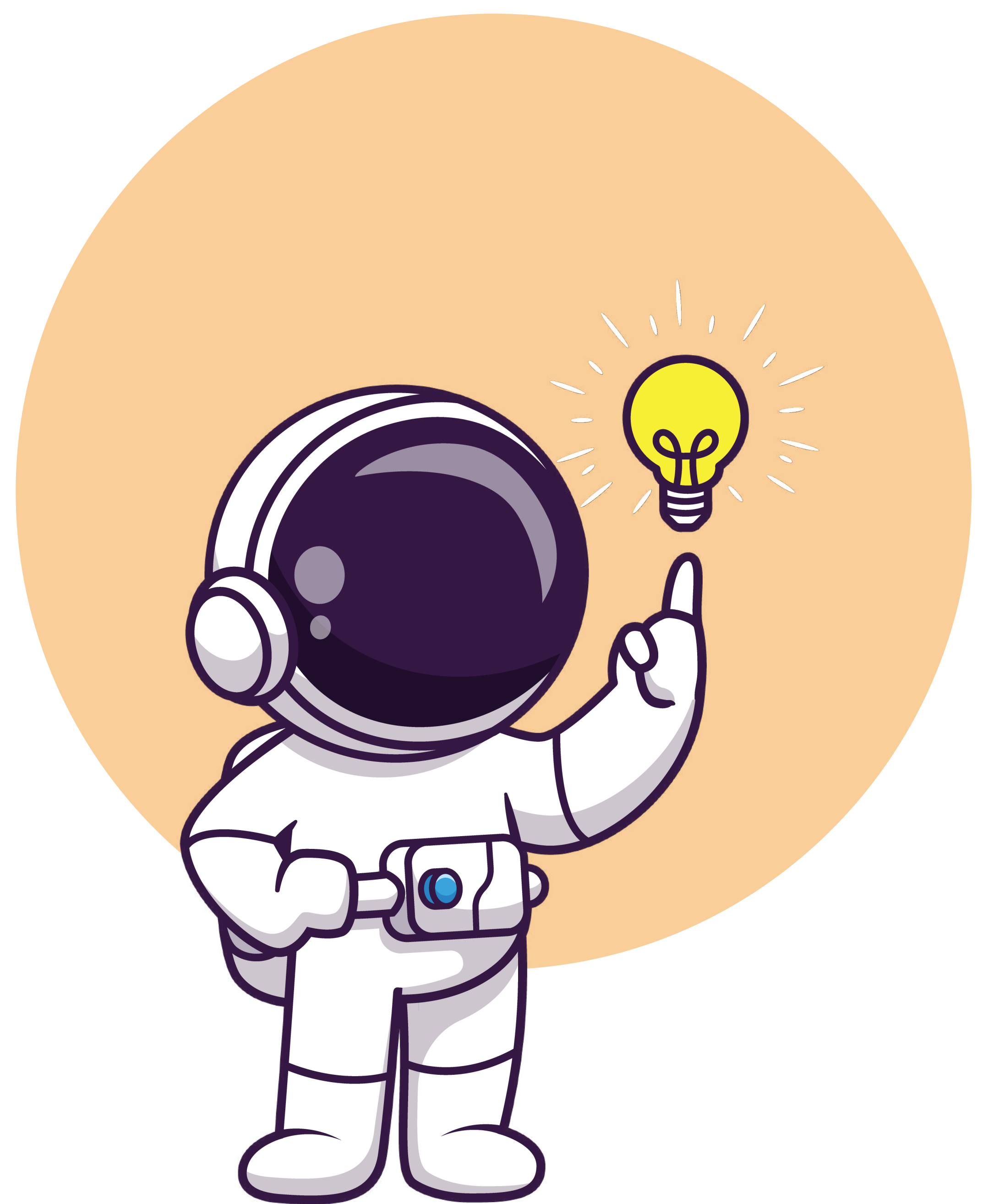




| Aspect                 | Traditional Dictation  | AI-Powered Dictation   |
|------------------------|--|--|
| Speed and Accuracy     | <p><b>Speed:</b> Manual transcription process can be slow, often taking hours to days.</p> <p><b>Accuracy:</b> Prone to human errors, misinterpretations, and inconsistencies.</p>                 | <p><b>Speed:</b> Real-time transcription with immediate availability.</p> <p><b>Accuracy:</b> High accuracy rates with advanced AI algorithms and natural language processing.</p>                                     |
| Cost-Effectiveness     | <p><b>Costs:</b> High costs associated with hiring transcriptionists and manual review processes.</p> <p><b>Overheads:</b> Additional expenses for training, equipment, and quality assurance.</p> | <p><b>Costs:</b> Lower long-term costs due to automation and reduced need for human transcriptionists.</p> <p><b>Efficiency:</b> Streamlined processes reduce operational expenses and improve overall efficiency.</p> |
| User Satisfaction      | <p><b>Feedback:</b> Often delayed feedback on transcriptions, leading to frustration.</p> <p><b>Ease of Use:</b> Can be cumbersome and time-consuming, impacting user satisfaction.</p>            | <p><b>Feedback:</b> Instantaneous feedback and editing capabilities.</p> <p><b>Ease of Use:</b> User-friendly interfaces with intuitive controls, enhancing user experience.</p>                                       |
| Adoption Rates         | <p><b>Adoption:</b> Gradually declining as healthcare providers seek more efficient solutions.</p>   | <p><b>Adoption:</b> Rapidly increasing due to its efficiency and accuracy.</p>   |
| In Healthcare Settings | <p><b>Statistics:</b> Only 30% of healthcare facilities still rely on traditional dictation methods.</p>   | <p><b>Statistics:</b> Over 70% of healthcare facilities are now adopting AI-powered dictation tools, with a projected increase of 20% in the next two years.</p>   |

## The JOSH Advantage

JOSH, an AI-powered dictation tool integrated within ModuleMD's Hubble App, offers a significant edge over traditional dictation methods. It provides unparalleled speed and accuracy, cost-effectiveness, user satisfaction, and is rapidly being adopted across healthcare settings. With JOSH, clinicians can experience seamless and efficient documentation, allowing them to focus more on patient care. Embrace the future of healthcare dictation with JOSH.



## Ready to Transform Your Practice?

Experience the benefits of JOSH today. Contact us for a demo and see how AI-powered dictation can revolutionize your workflow. Visit our website or call us at 877-347-7978 to learn more.

**Don't miss out—streamline your documentation with JOSH!**